



BOWMANS
INTERMODAL

BOWMANS INTERMODAL IN THE SUPPLY CHAIN

ICHCA Lunch
The Lakes Resort Hotel

Scott McKay
25 May 2016



BOWMANS
INTERMODAL



OUTLINE

- Who are we
- Where are we
- Our journey
- What we do
- What is our focus
- Where are we going

WHO ARE WE

- Mission
 - To provide integrated rail and logistics solutions for regional Australia
- People
 - “Safety is a culture”
 - Community
 - “Engaged & committed workforce”
 - Collaboration
- Owners/customers
- Partners
 - CFCLA, SCF
 - ARTC, GWA
 - FACT
 - EPMS
 - Government
 - Associations



WHERE ARE WE

- Bowmans
- Port Pirie
- Broken Hill
- Adelaide



OUR JOURNEY

- 2000 Bowmans hay and grain site established
- 2003 Terminal established with a first 10,000 m² hard stand area; rail service begins
- 2008 20,000 m² Hardstand expansion
- 2012 600 Ha zoned industrial
- 2013 Road train access gazetted
- 2013 Toll and AMG (now AGT) become shareholders
- 2015 Further expansion to 40,000 m² hard stand area
Terminal and RLE at Broken Hill
- 2016 Bowmans Intermodal changes name to Bowmans Rail to more accurately reflect the future direction of the business

2015/16 hardstand



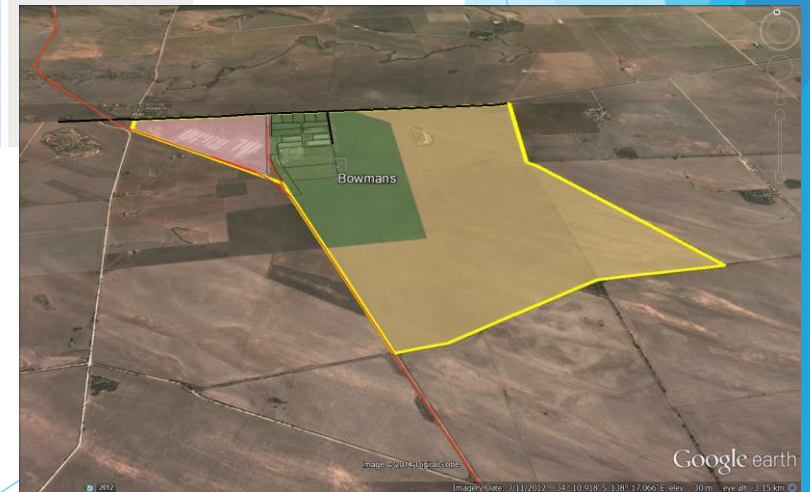
2015/16 hardstand



Planned Expansion and Rail duplication

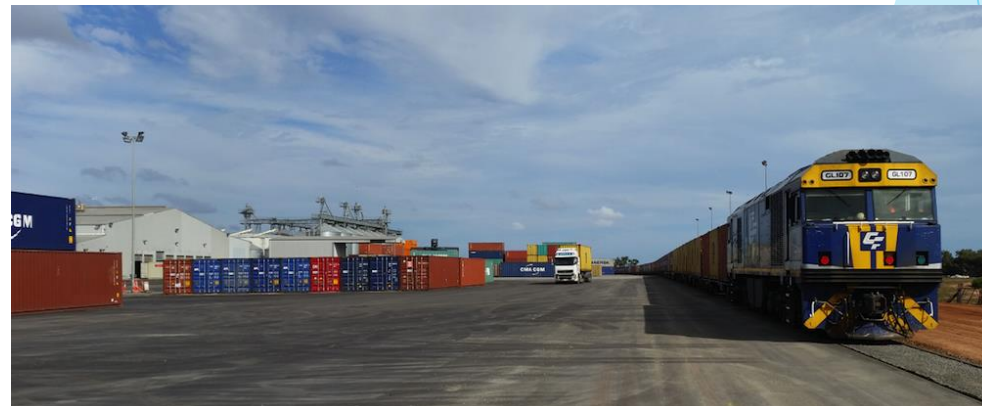


- Existing Rail
- Proposed Rail
- Overall Key Plan
- Car Park
- Fumigation Area
- Shared Office
- Shower / Toilet
- Unsealed yard
- Light Sealed Pavement
- Heavy Duty Pavement



WHAT WE DO

- Short haul rail
 - Broken Hill Adelaide
 - Pirie Bowmans Adelaide
- IMT
 - 600 ha zoned Industry
 - Road trains (PBS Level 3A)
 - DG's, ANFO
 - Port link
 - Hinterland



WHAT IS OUR FOCUS

- Sectors
 - Agriculture
 - Resources
- Services
- Freight
 - Inbound and outbound
 - Fast turnaround
- Shipping lines
 - Availability
 - Cleaning, repairing, lining containers
 - DPI, Fumigation
 - Refrigeration



On Time Performance

Weekly On-Time Departure Scorecard										
Day	Train #	Sched Path Time	Actual Departure Time	Sched Path Arrival Time	Actual Arrival Time	Crew	week 20	Comments		
Monday	16/05/2016 4114S	4:00	3:55	6:20	5:28	CARTER	SEAL			
	16/05/2016 1417S	10:34	11:14	13:00	13:00	CARTER	SEAL			
Monday	16/05/2016 4120S	15:50	15:50	17:38	17:25	HENDERSON	WODSON			
	16/05/2016 1421S	21:00	21:36	23:20	23:10	HENDERSON	WODSON	CLEARING CONTAINERS FROM FIRST TRAIL		
Tuesday	17/05/2016 4419S	3:50	4:16	6:15	5:50	OLSEN	CARTER	SHUNT YARD / RUN AROUND		
	17/05/2016 4416S	10:30	10:25	13:30	13:10	OLSEN	CARTER			
Tuesday	17/05/2016 4120S	15:15	14:40	17:22	16:02	HENDERSON	LAZDINS			
	17/05/2016 1421S	21:30	20:20	0:22	22:47	HENDERSON	LAZDINS			
Wednesday	18/05/2016 4114S	4:00	Cancelled	6:10						
	18/05/2016 1417S	10:54	Cancelled	12:45						
Thursday	19/05/2016 4419S	4:10	4:05	6:55	5:45	OLSEN	SEAL			
	19/05/2016 4416S	10:25	11:28	12:25	13:50	OLSEN	SEAL	87 OFF / 76 ON		
Thursday	19/05/2016 4120S	15:45	15:30	18:00	17:37	HENDERSON	LAZDINS			
	19/05/2016 1421S	20:45	19:50	23:05	21:50	HENDERSON	LAZDINS			
Friday	20/05/2016 4114S	4:00	4:00	6:06	5:35	OLSEN	WODSON			
	20/05/2016 1417S	10:34	9:32	13:05	12:45	OLSEN	WODSON			
Friday	20/05/2016 4120S	16:20	15:52	18:10	17:25	HENDERSON	GRIFFIN			
	20/05/2016 1421S	21:45	20:32	23:55	22:10	HENDERSON	GRIFFIN			

Cause and Effect Diagram

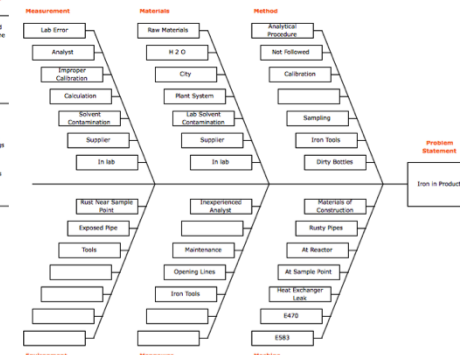
Description
This template illustrates a Cause and Effect Diagram, also called a Fishbone or Ishikawa Diagram.

Instructions

- Enter the Problem Statement in box provided.
- Brainstorm the major categories of the problem. Generic headings are provided.
- Write the categories of causes as branches from the main arrow.

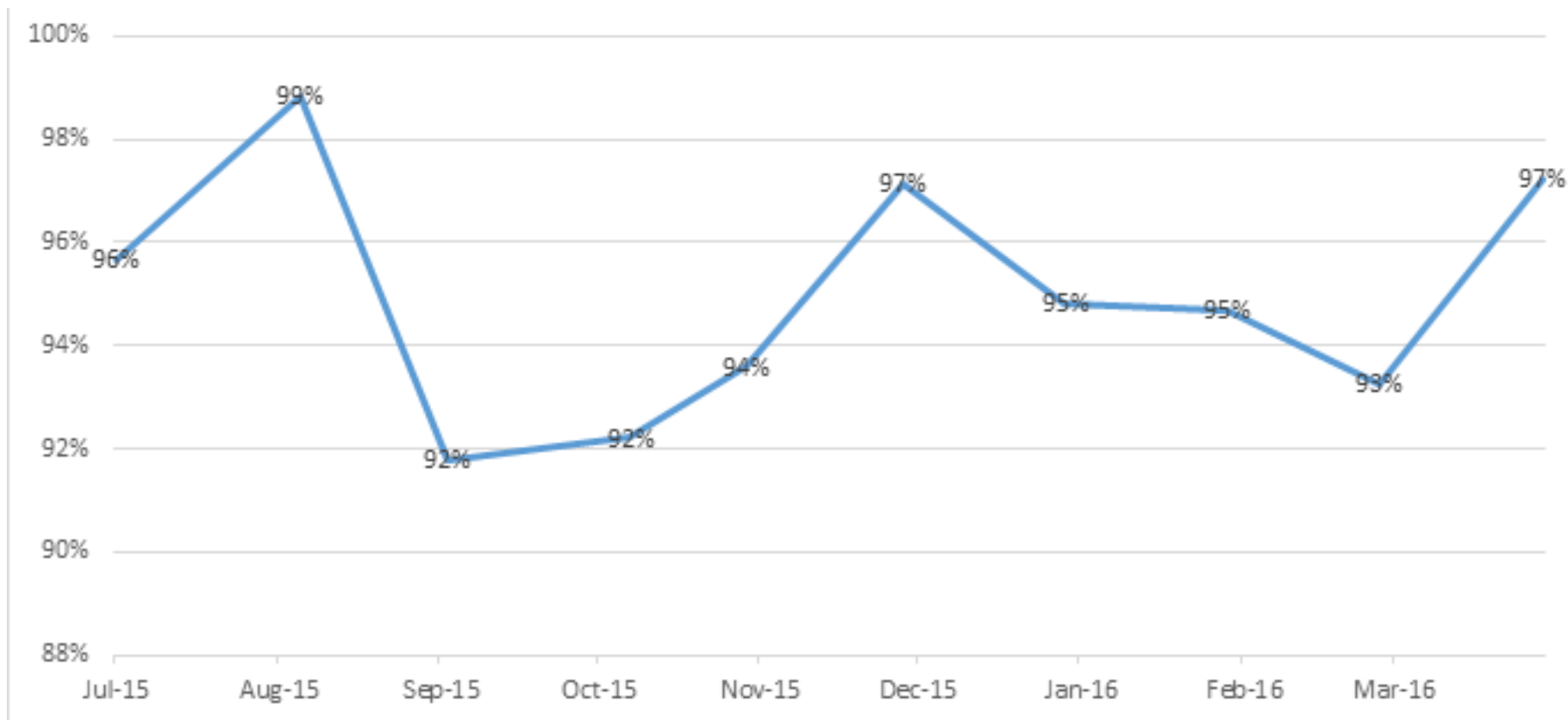
Learn More

To learn more about other quality tools, visit the ASQ Learn About Quality web site.



High slot utilisation

Rail Export Utilization



WHAT IS OUR FOCUS

- Differentiators
 - Multi skilled flexible workforce
 - Understand the supply chain – end to end
 - Containers, Material Handling, Rail Equipment
 - Terminal development including Design, Approvals and Construction

WHERE ARE WE GOING

- National short haul
 - SA, NSW, Vic
 - Partners
- Terminals
- Units
 - Containers,
 - processed, not bulk

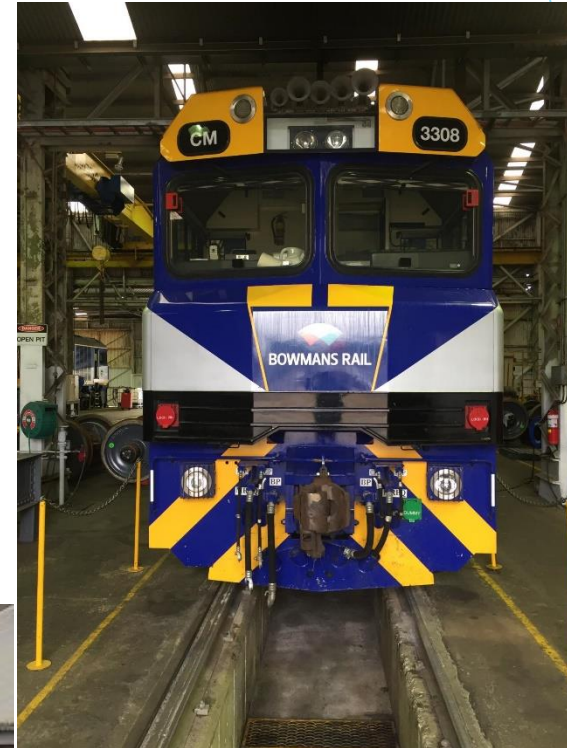


WHERE ARE WE GOING



BOWMANS RAIL

- Presence
 - Rebranding
 - Website www.bowmansrail.com.au
 - Brochures
 - Livery



THANK YOU

ANY QUESTIONS