

# Bowmans Rail

Linking regional business  
to international markets.



**BOWMANS RAIL**



# Bowmans Rail

Presentation to Regional  
Development Australia Far  
North 22 March 2023

Port Playford Hub – Playford  
Intermodal Project

Malcolm May,  
Executive Chairman



**BOWMANS RAIL**



**OUR MISSION:** TO PROVIDE INTEGRATED RAIL AND LOGISTICS SOLUTIONS FOR REGIONAL AUSTRALIA.



**BOWMANS RAIL**

# Who we are

Bowmans Rail is a privately owned company based in Balaklava, South Australia.



**BOWMANS RAIL**

# What we are proposing

Bowmans are proposing to establish intermodal facilities in Port Augusta and Pimba to cater for the current and expected freight growth volume in the Upper Spencer Gulf and North West regions of the state.



**BOWMANS RAIL**

# How we intend to do it

- Bowmans Rail hope to work closely with Hallett Concrete and have them as a core customer at the Port Adelaide, Port Augusta and Pimba facilities.
- Bowmans Rail believe direct rail services from Port Augusta can bring improved efficiencies for all potential customers in their supply chains.



**BOWMANS RAIL**

# Who will benefit

- We believe this intermodal model will bring benefits to any customers who utilise the service offering. This would be both economically through reduced transportation costs and environmentally for those wishing to push their companies towards their Greenhouse Gas emissions targets.
- Road users and maintainers of roads would see substantial benefit. Hallett Concrete forecasted volumes alone would see 140,000 kilometres of truck journeys (278 return trips of B Triple trucks) per week removed from state roads.
- Employment in regional South Australia is a beneficiary of this proposal.



# Scope of Rail Operations



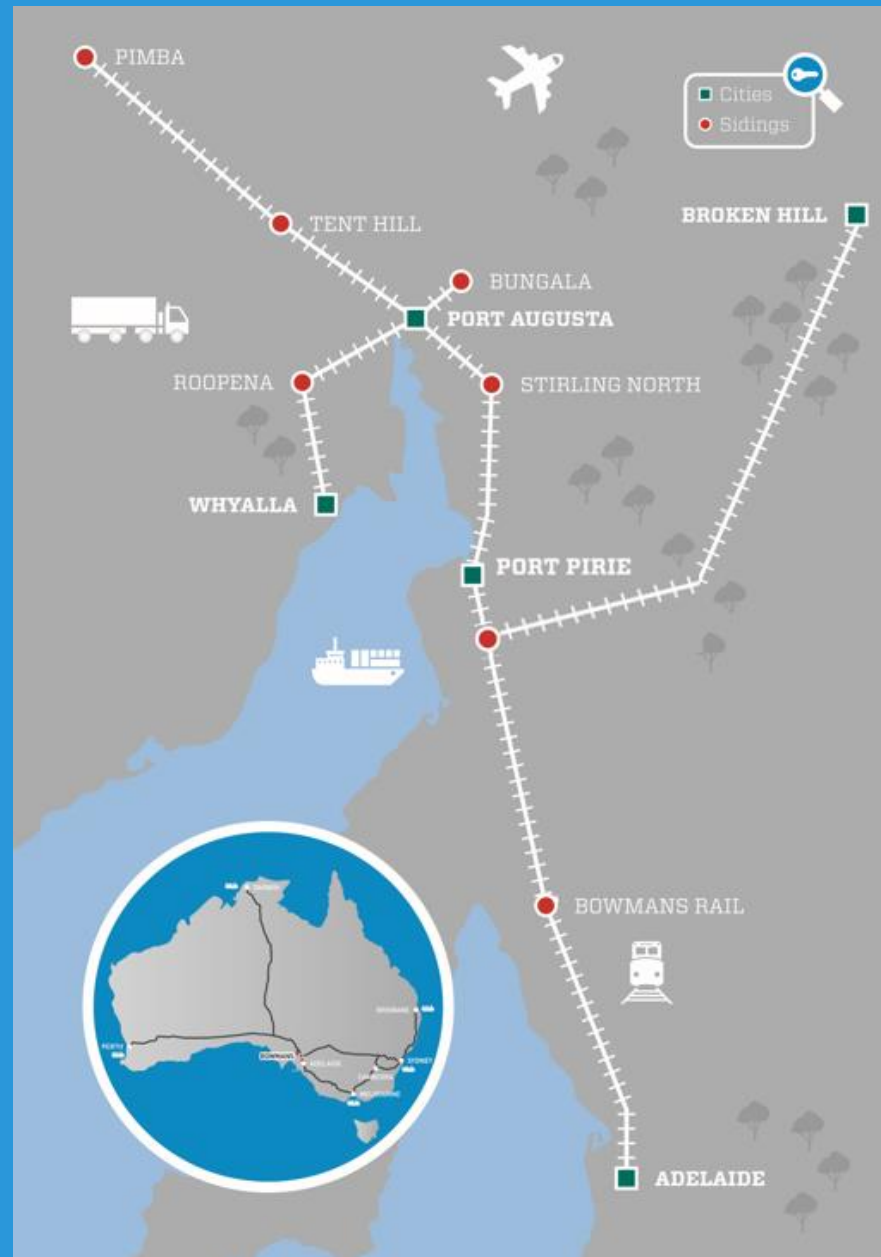
**BOWMANS RAIL**



# Mine to Port

## Distances to Port Adelaide

- 482km Pimba
- 517km Broken Hill
- 384km Whyalla
- 309km Port Augusta
- 228km Port Pirie
- 100km Bowmans



# Bowmans Accreditation

- Adelaide to Bordertown
- Adelaide to Kalgoorlie
- Adelaide to Broken Hill



**BOWMANS RAIL**

# Terminals

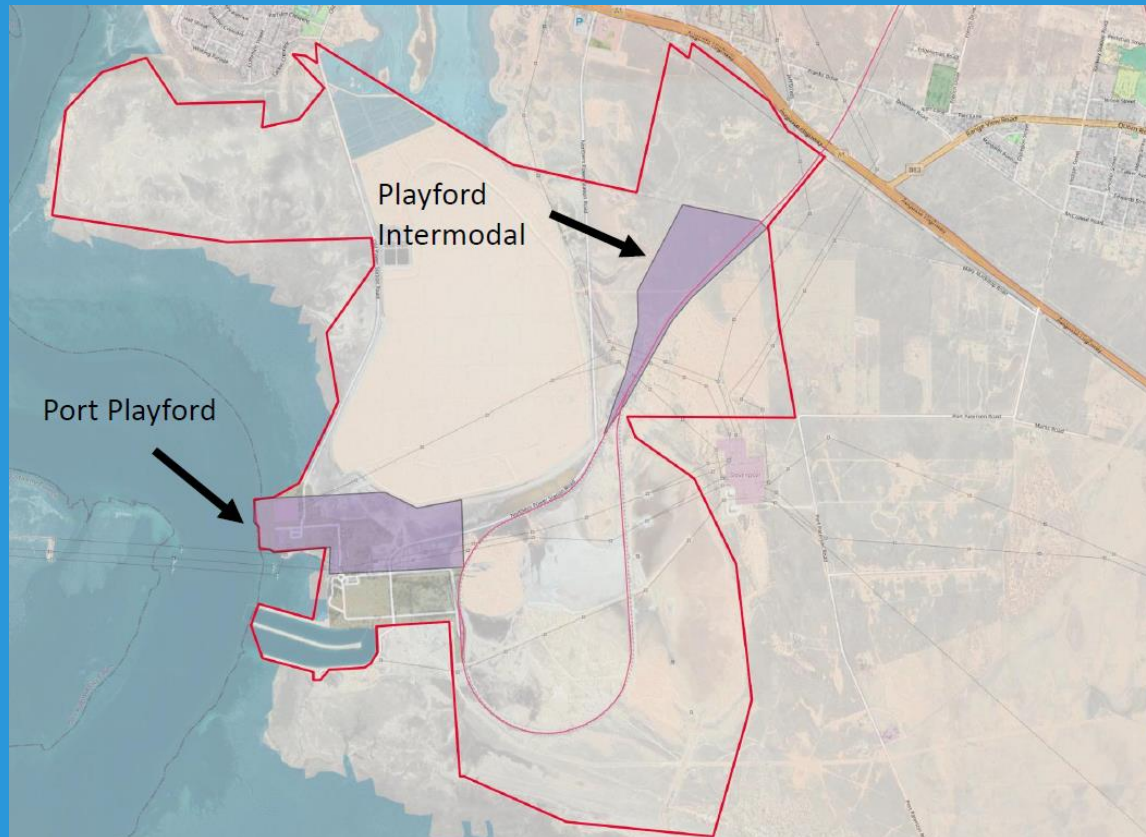
Bowmans Rail will have the capability to service the following terminals in South Australia.

- Bowmans
- Inner Ports Adelaide
- Outer Ports Adelaide
- Port Augusta
- Port Pirie
- Whyalla
- Pimba
- Bordertown



# Port Playford Intermodal

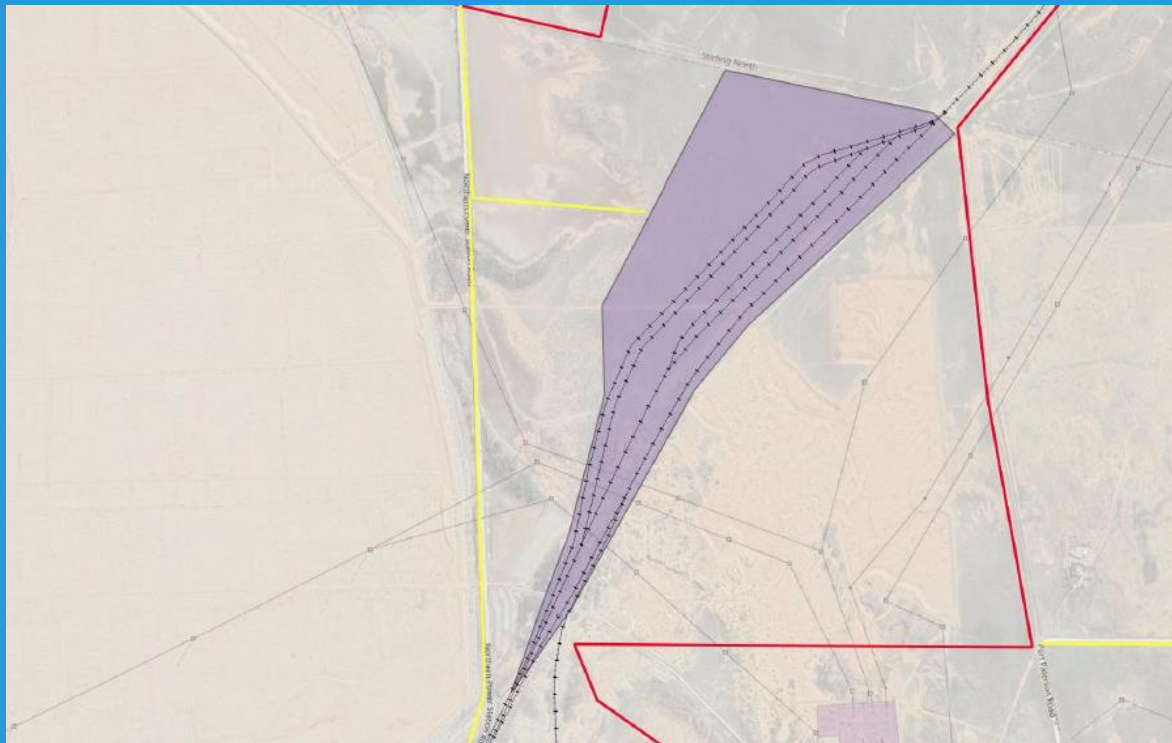
- 16 hectares of land secured
- Road - rail interface
- Rail operations in Playford precinct managed by Bowmans Rail



# Port Playford Intermodal

In Stage 2 of the development, we plan to further expand the site to offer increased freight handling capacity and greater facilities.

Our intent is for the intermodal zone to grow to economically match the market in the regions and maximize use of the site.



**BOWMANS RAIL**

# Equipment

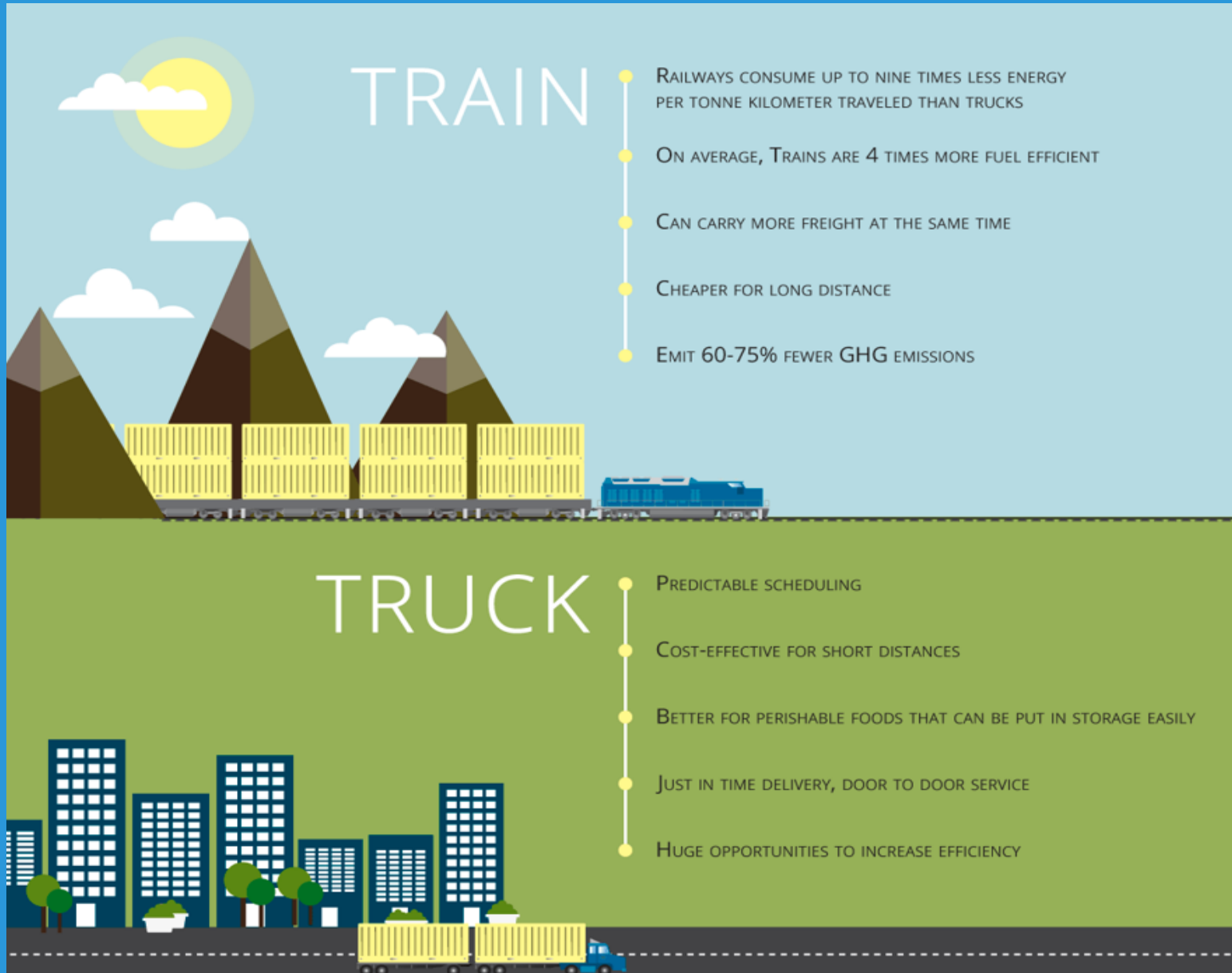
Bowmans Rail has access to and will use the following equipment for this project;

- 3,000-4,000 hp locomotives
- 40' container wagons
- 60' container wagons
- Bulk hoppers
- 60 t Reach Stackers



**Bowmans Rail will match assets to suit the task**

# Greener logistics



**BOWMANS RAIL**

# Summary

Thank you for the opportunity to present to you today

[www.bowmansrail.com.au](http://www.bowmansrail.com.au)

[mmay@bowmansrail.com.au](mailto:mmay@bowmansrail.com.au)

Mobile: 0419 822 312



**BOWMANS RAIL**